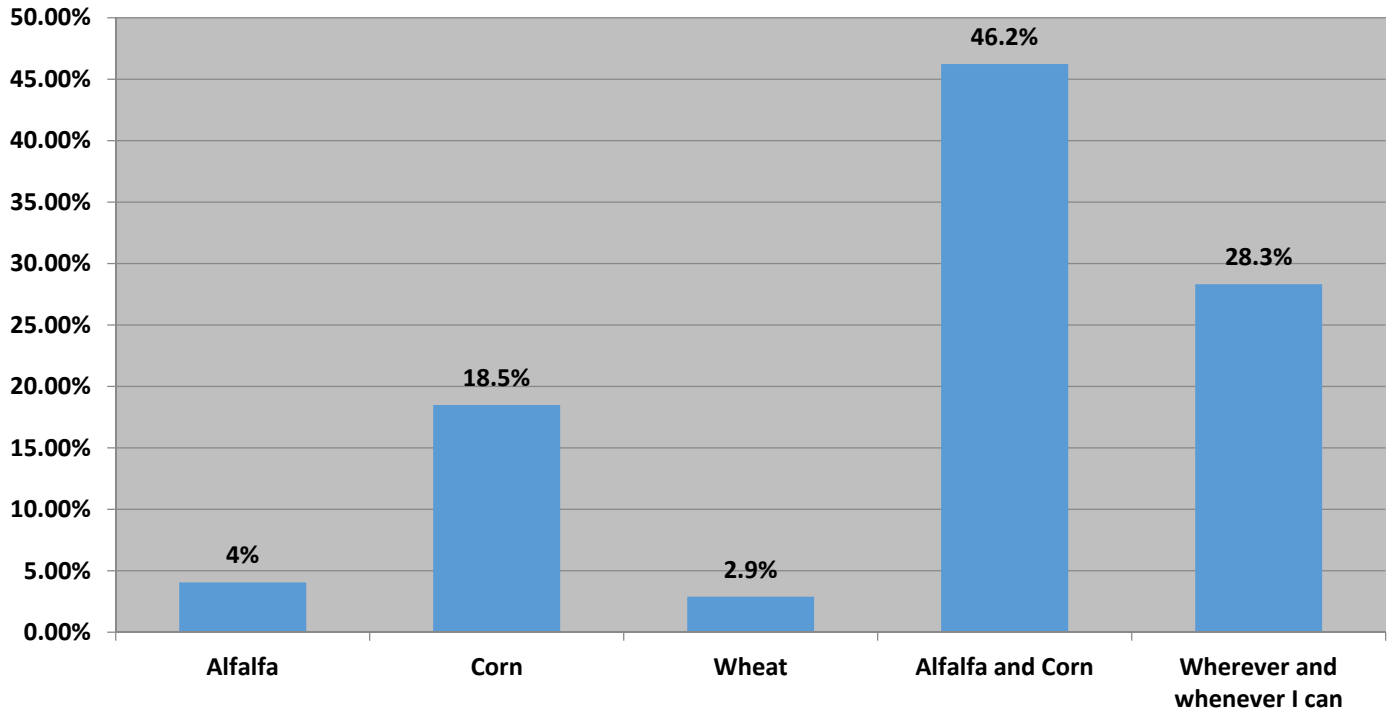
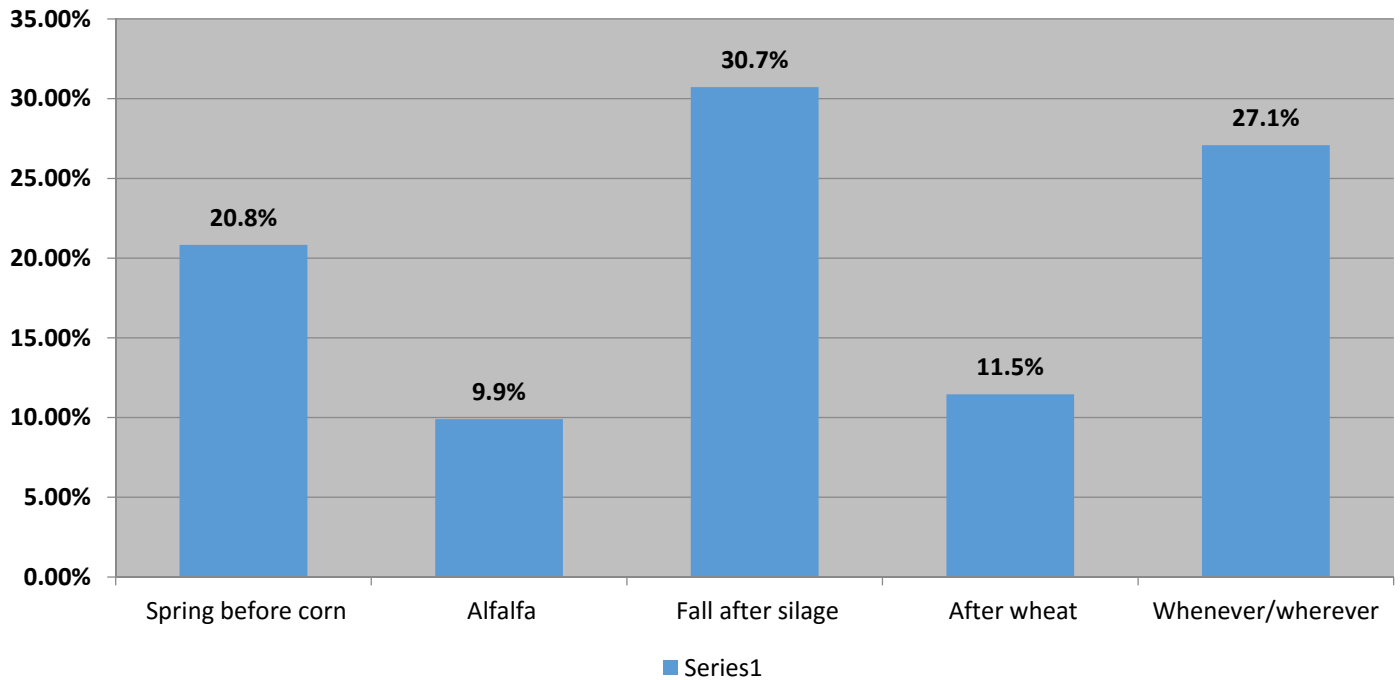


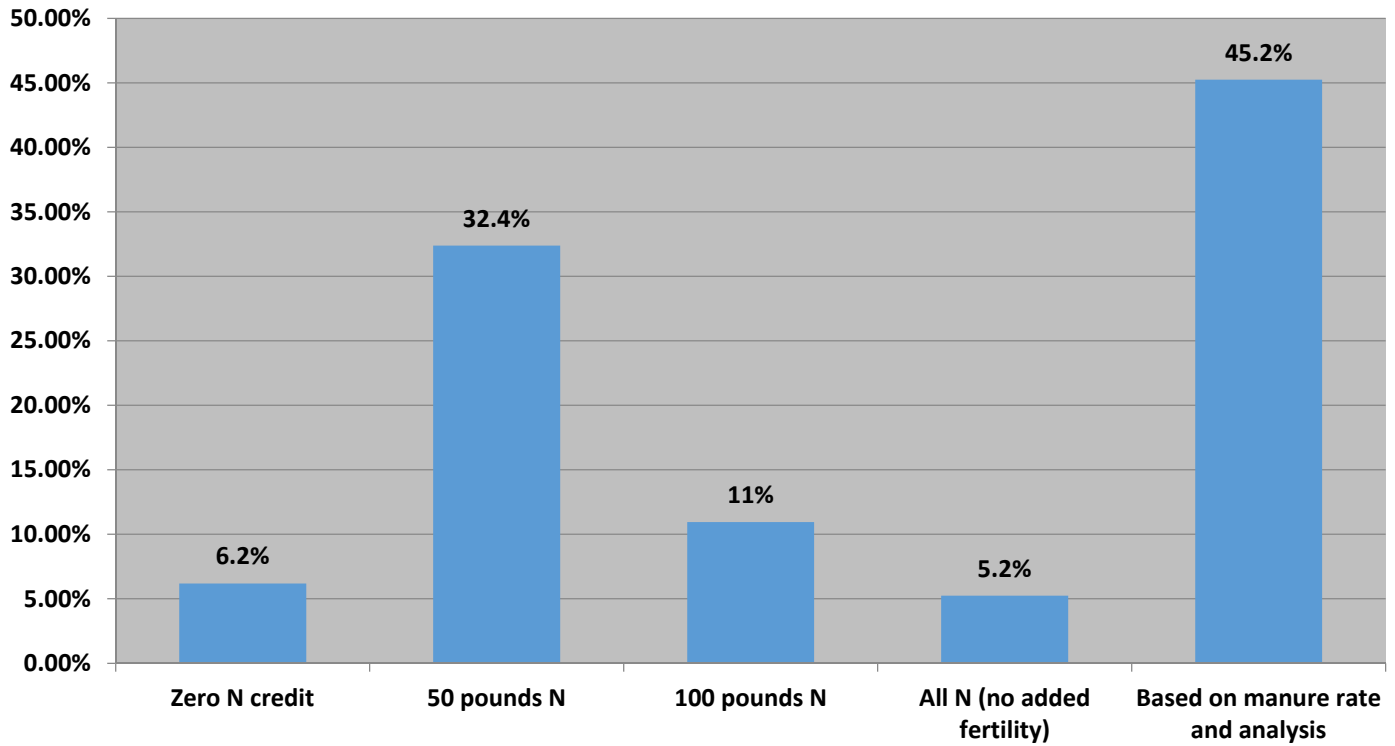
### 1.) What crop gets manure?



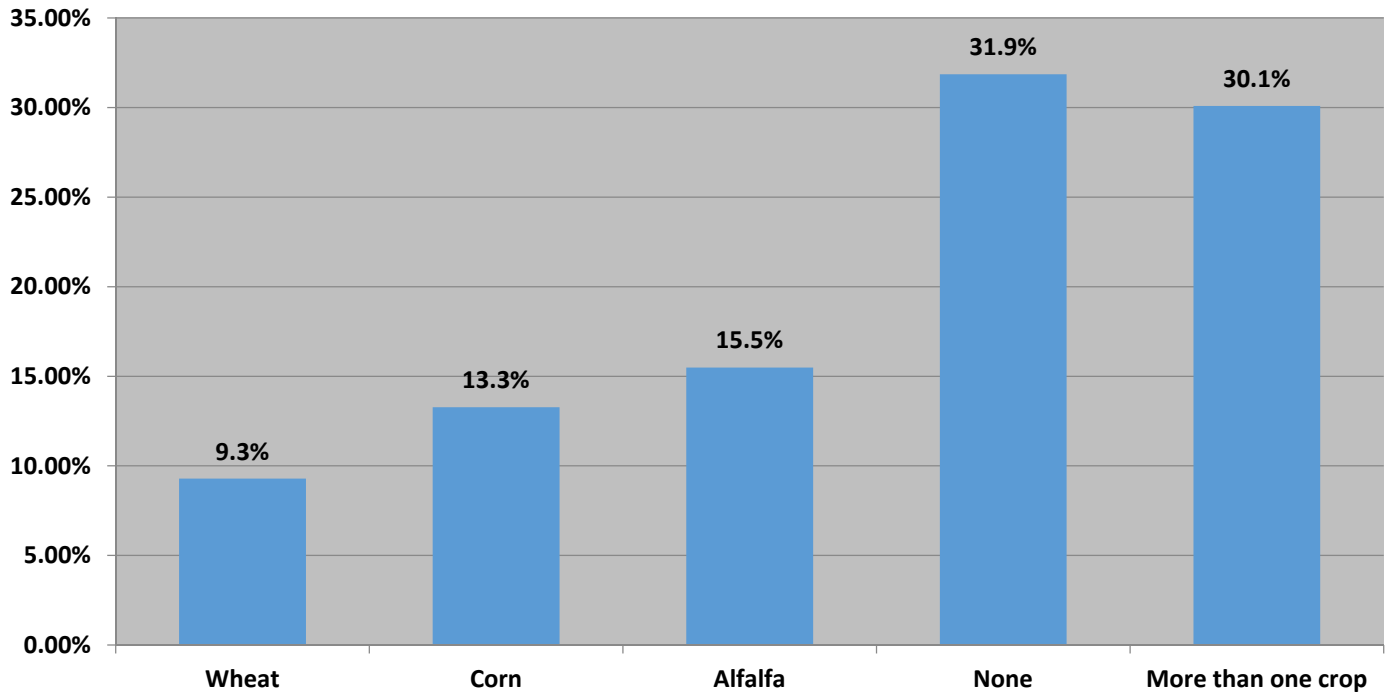
### 2.) When do you apply manure?



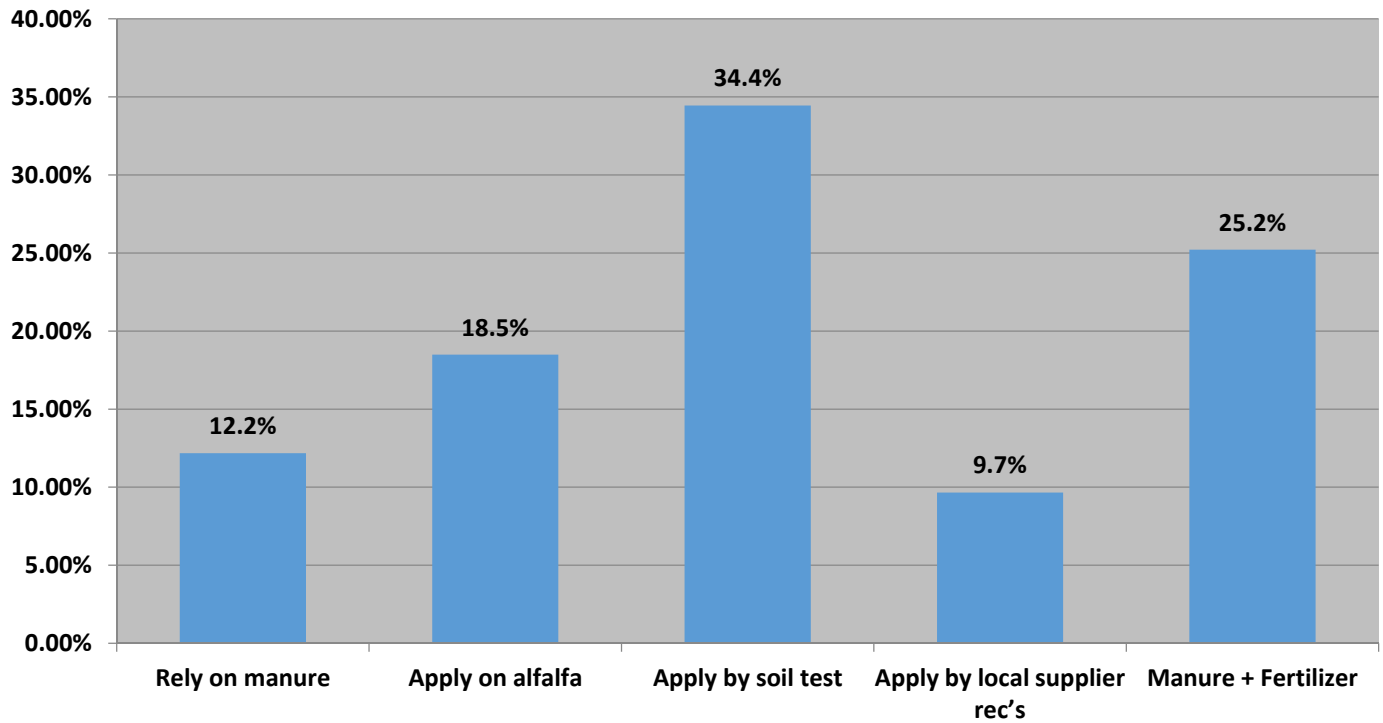
### 3.) Manure N Credit Corn?



### 4.) Do you apply sulphur?



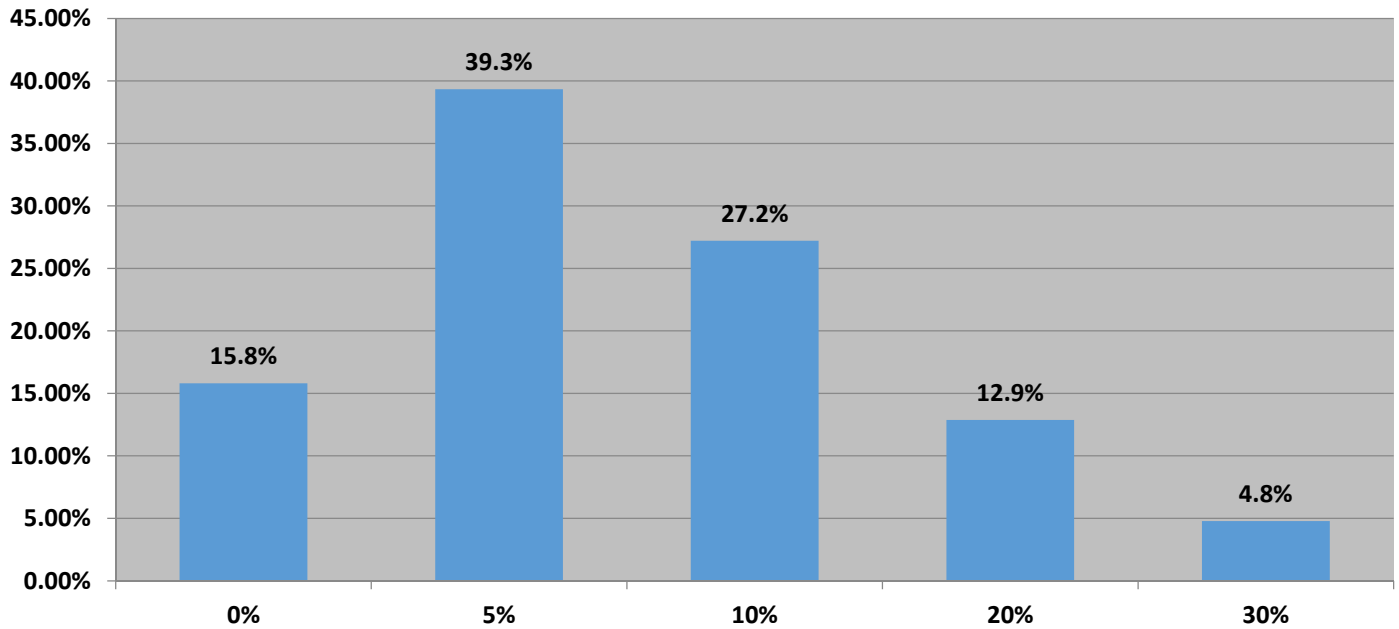
### 5.) Potash applications?



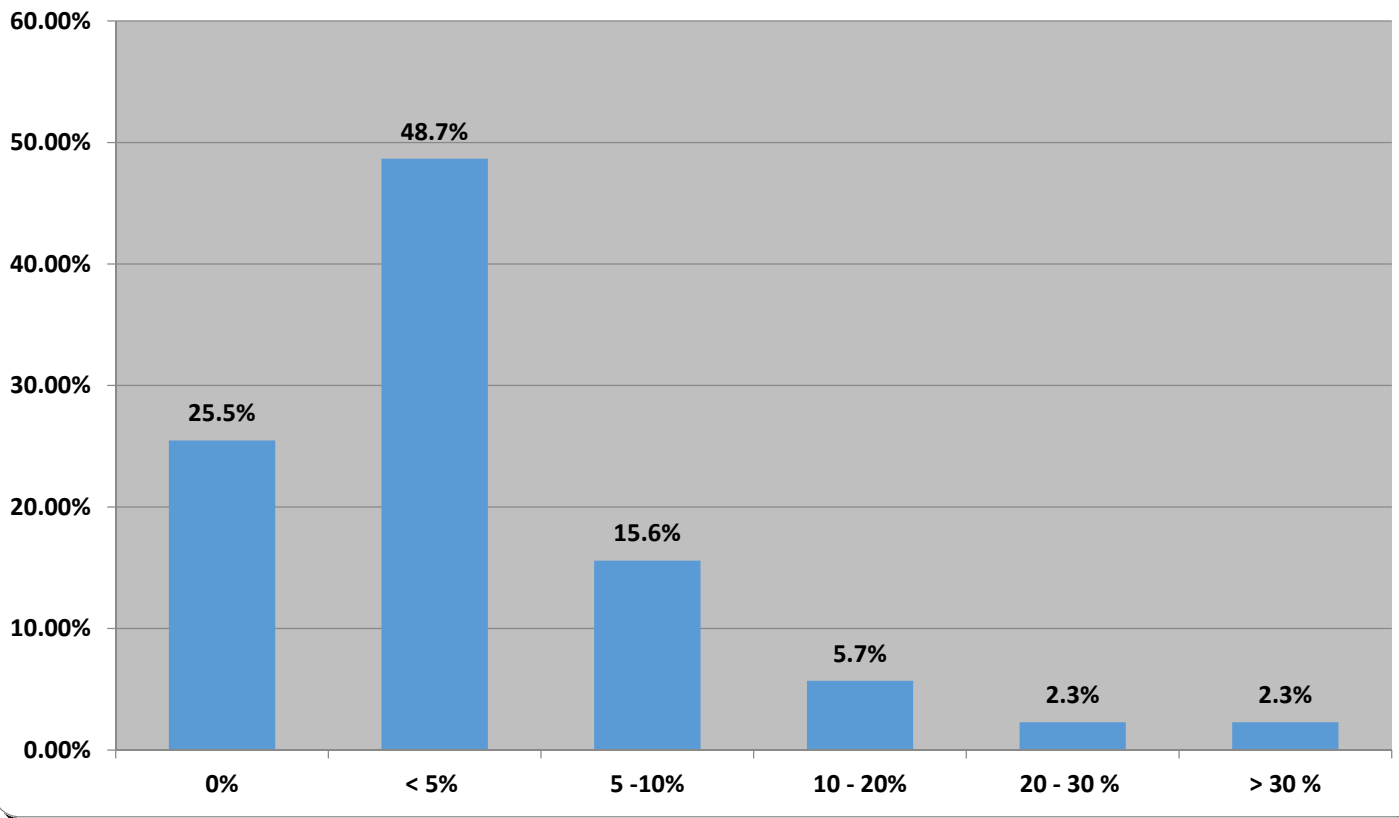
**proAction animal care benchmarking starts next fall. Hock score will be assessed using these criteria**

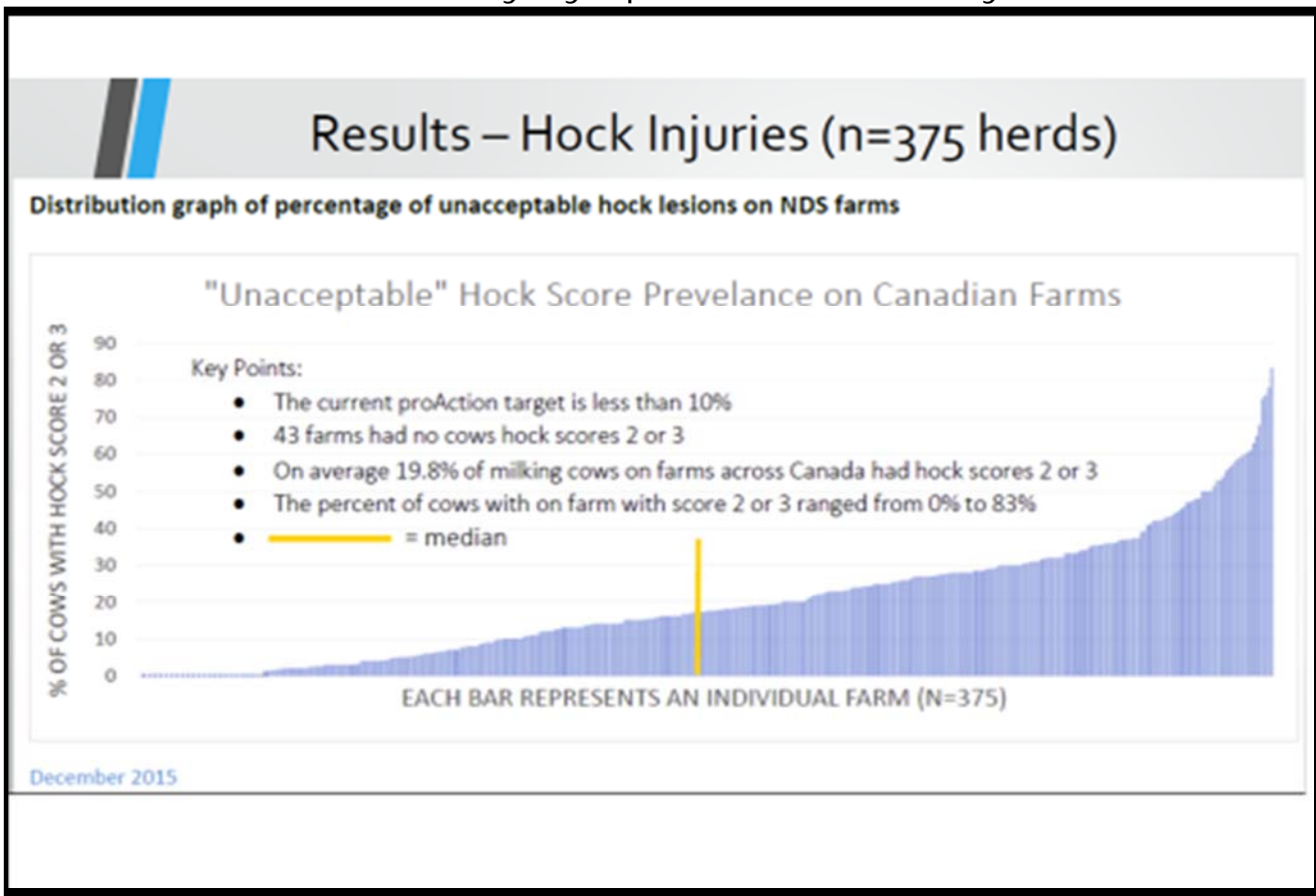
SCORE 0	SCORE 1	SCORE 2	SCORE 3
No Swelling. No hair is missing, some hair loss or broken hair.	No Swelling or minor swelling (< 1 cm). Bald area on hock	Medium swelling (1-2.5 cm) <u>and/or</u> lesion on bald area lesion is broken skin or a scab	Major swelling (> 2.5 cm). May have bald area/lesion.
Score 'A' Acceptable		Score 'U' Unacceptable	

### 6.) What maximum % of cows with score 2 and 3 should be considered good enough ?

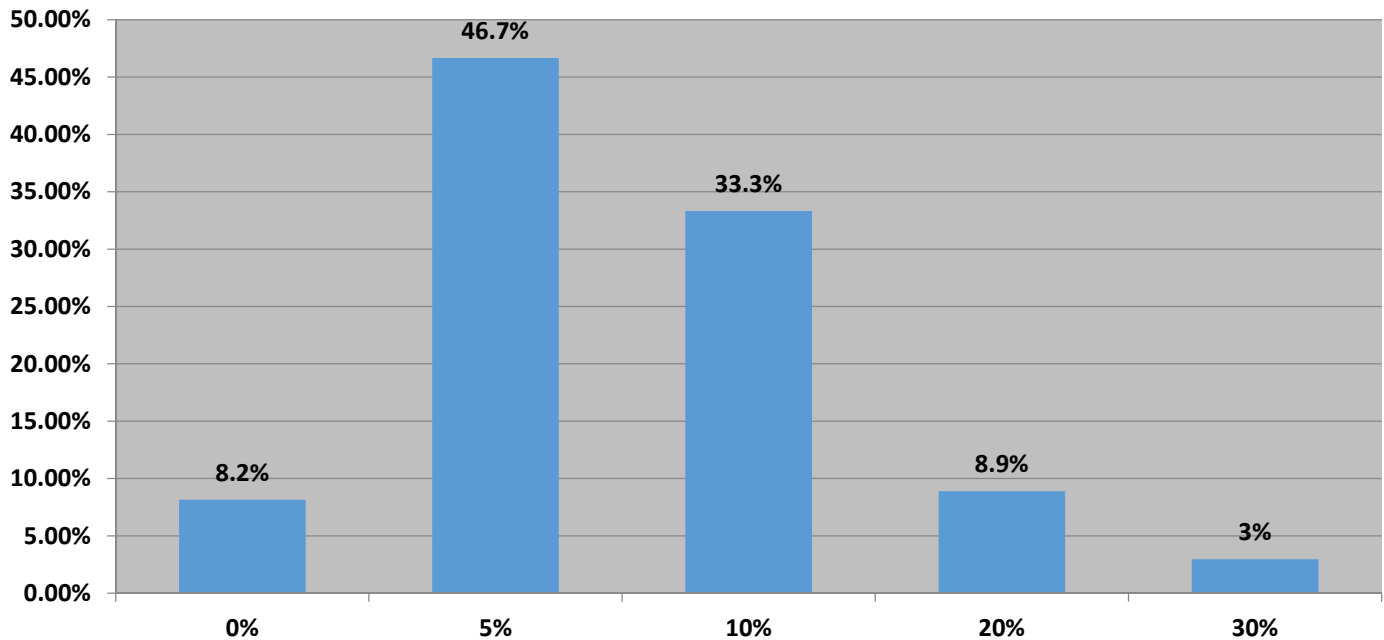


### 7.) What % of cows score 2 and 3 in your herd at home?

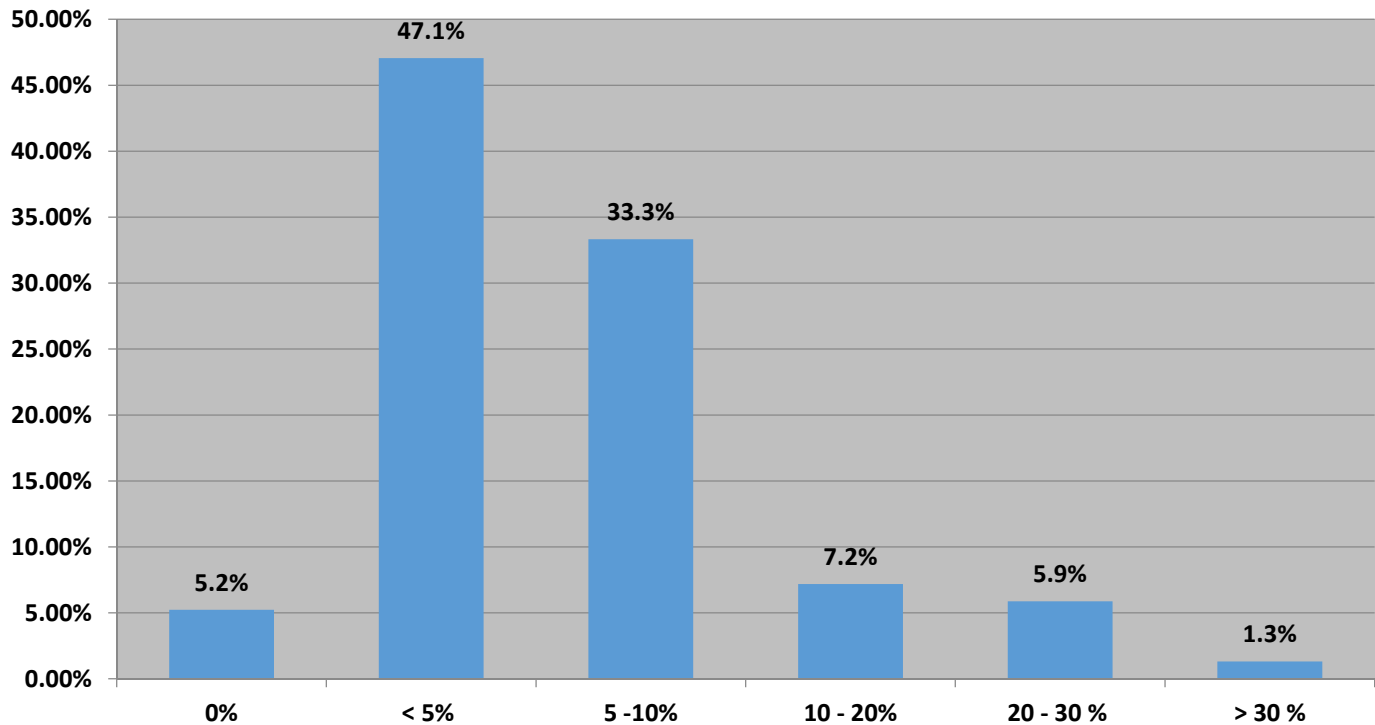




**8.) Cows that walk “with a noticeable limp” will be classified as lame. What maximum % should be acceptable?**



### 9.) On your freestall farm, what % of cows walk with a limp?



### Results – Lameness (Limp) Free/Pack (n=220 herds)

Distribution graph for lameness results for NDS free/pack farms in Canada



Can 75% of herds be unacceptable?  
We need to sort this out